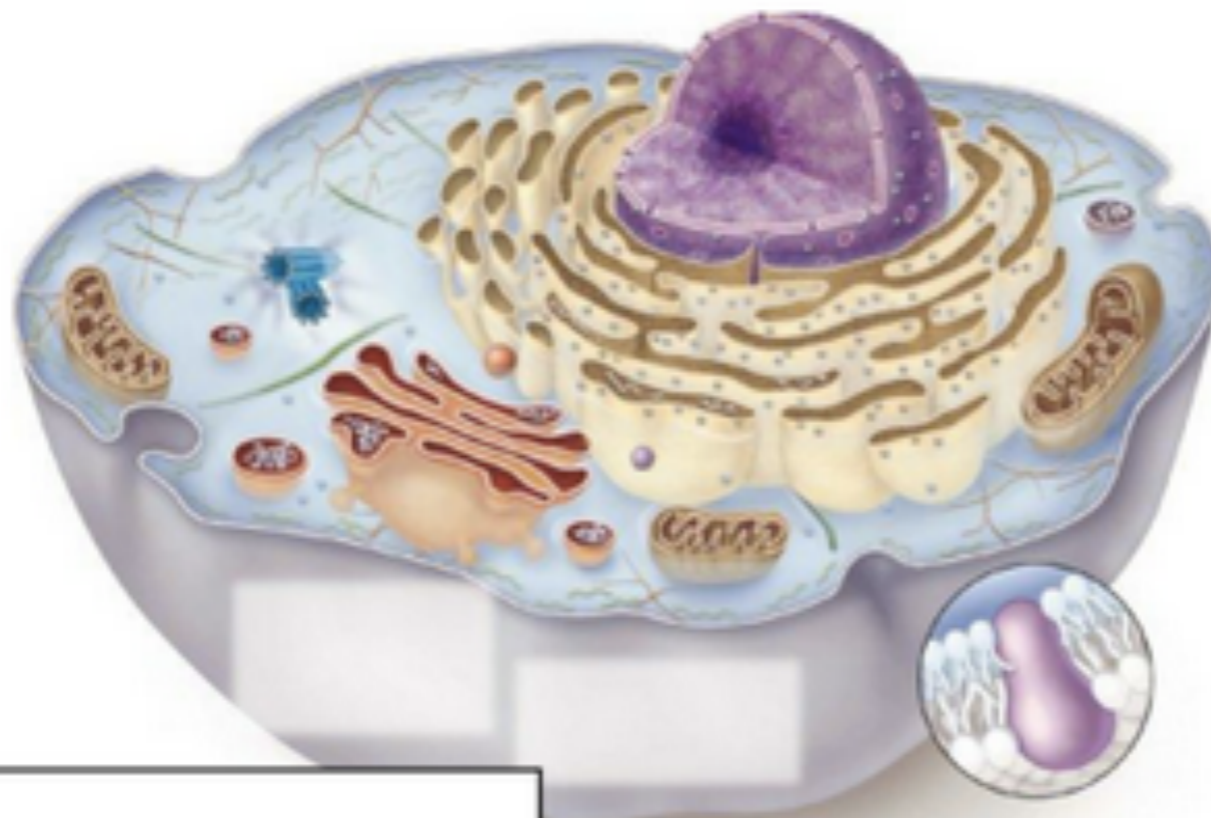


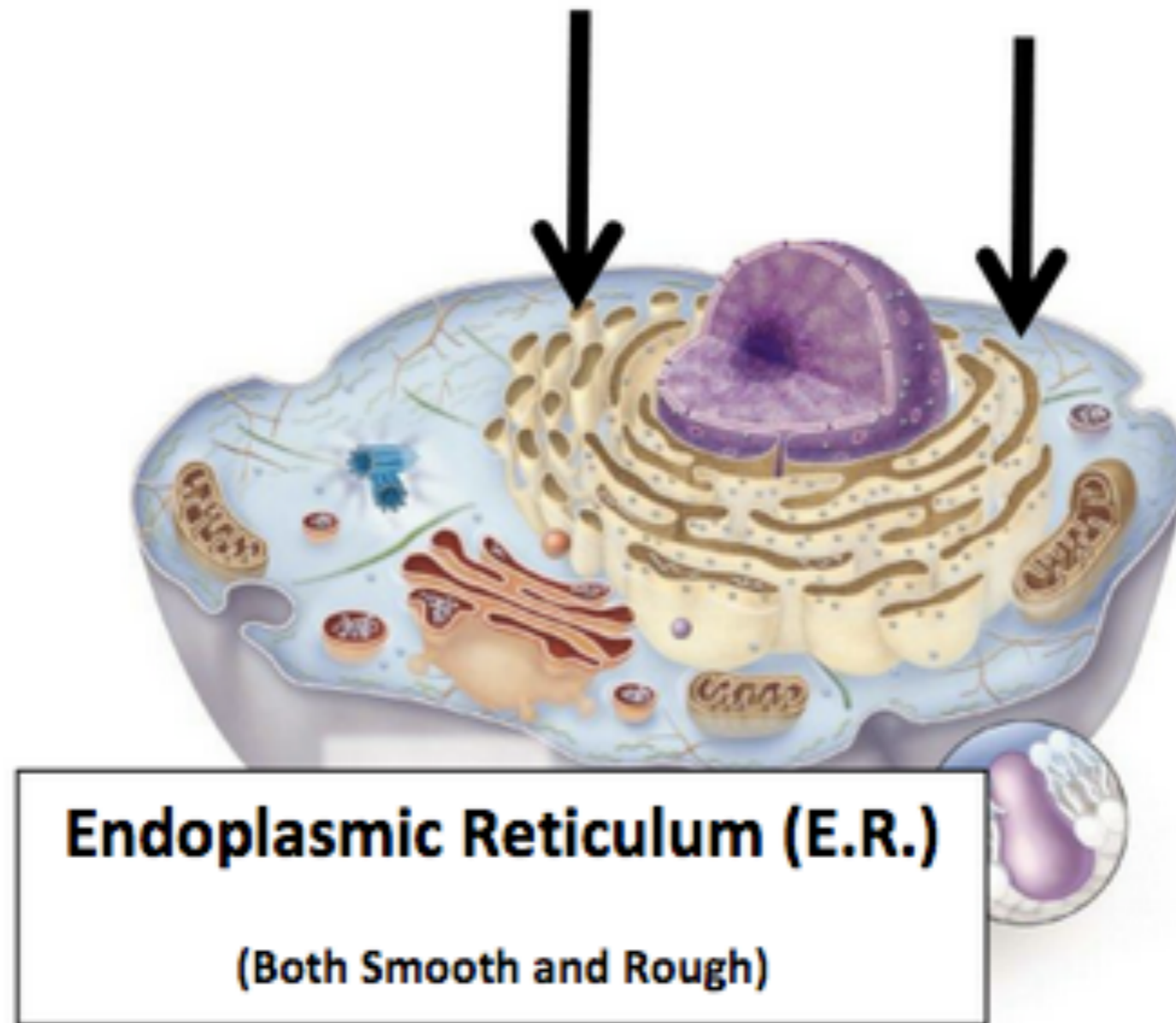
# Cell Structures

This organelle is present in ONLY Eukaryotic Cells like Plant, Animal, and Fungi cells

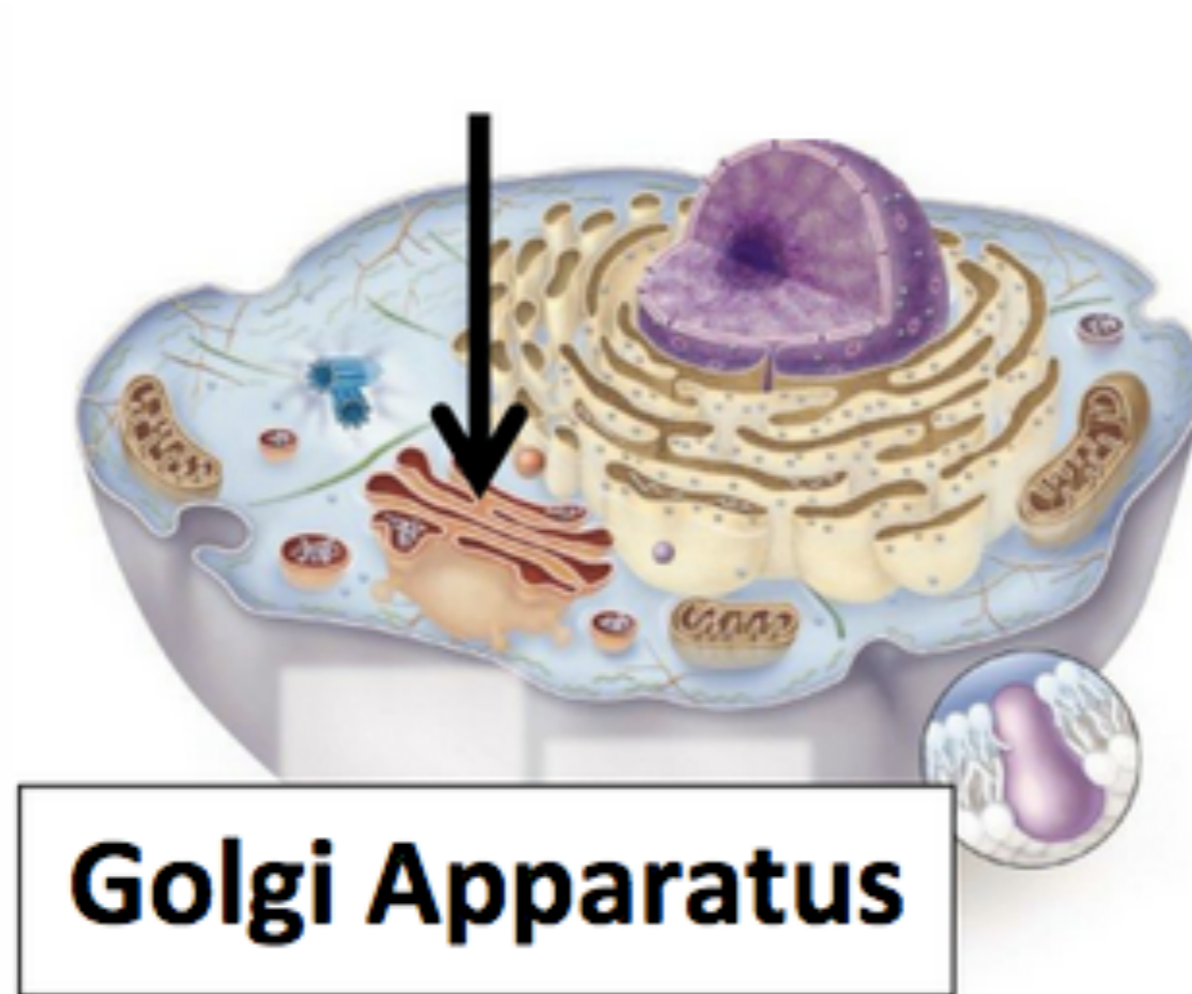
The nucleus holds the genetic information (DNA) in the cell.



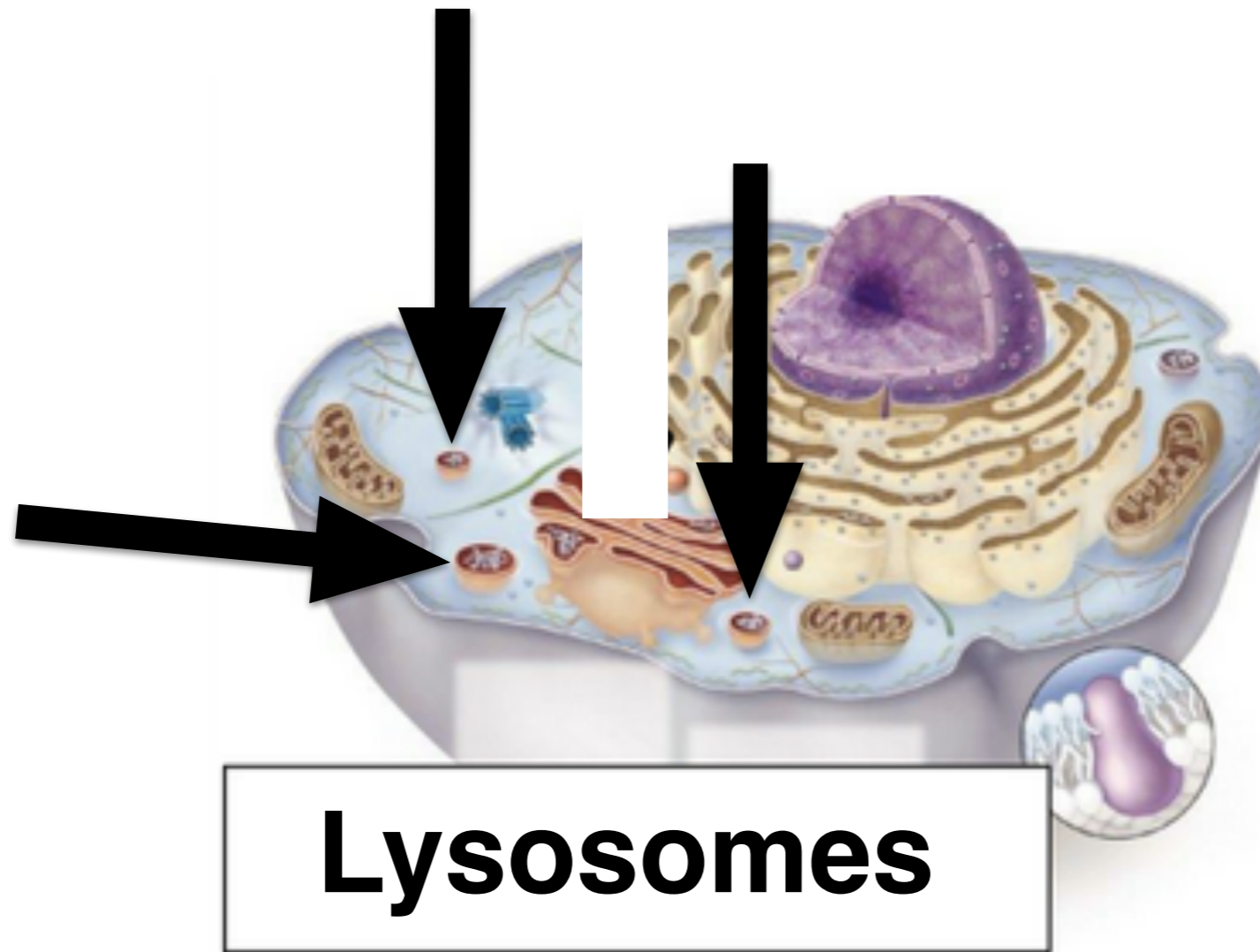
**Nucleus**



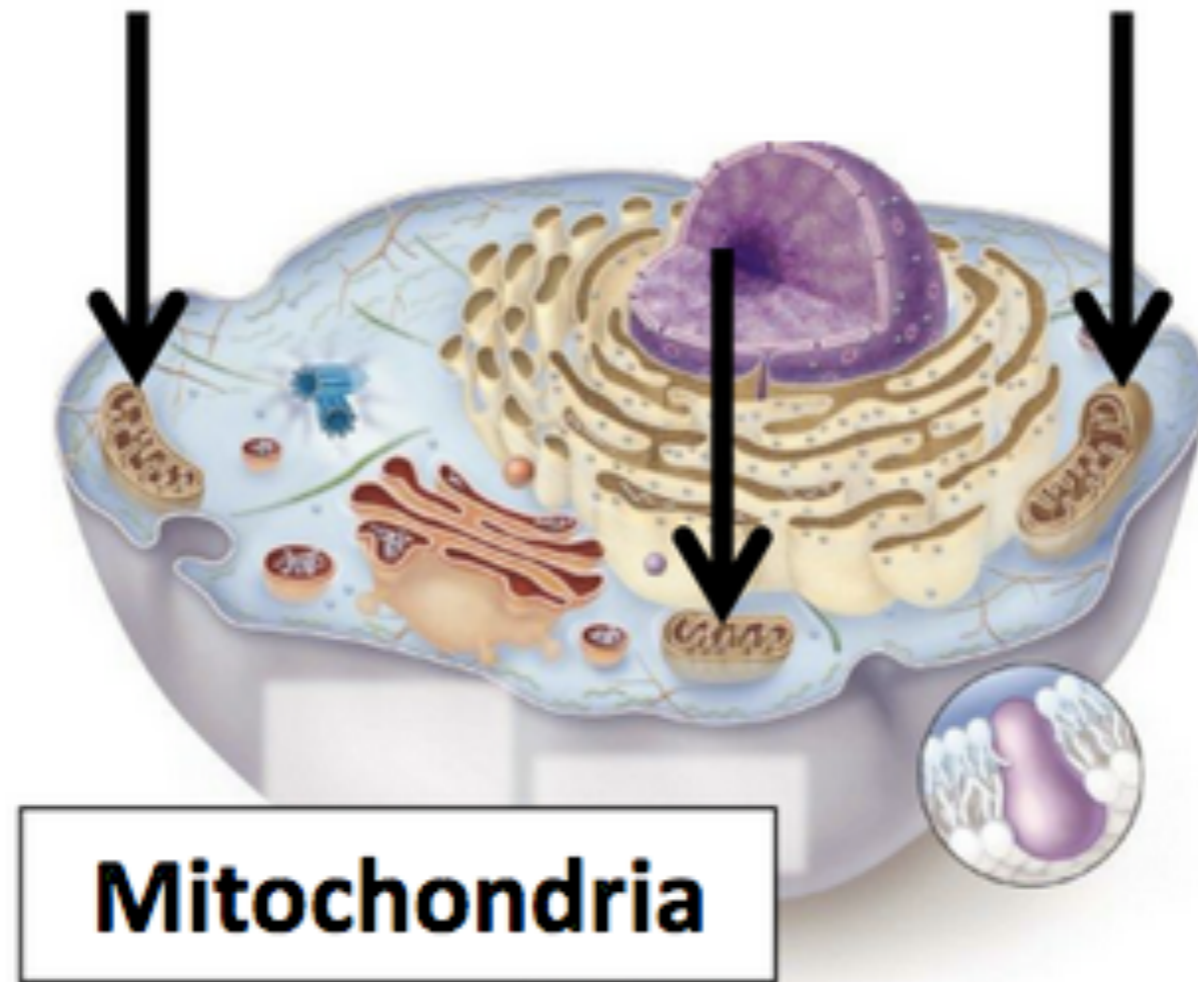
The endoplasmic reticulum is where many proteins are made in the cell. These proteins are necessary for many functions of the cell.



The golgi apparatus is where proteins are modified and properly “packaged.” This step is necessary for the proteins to do their jobs in the cell.

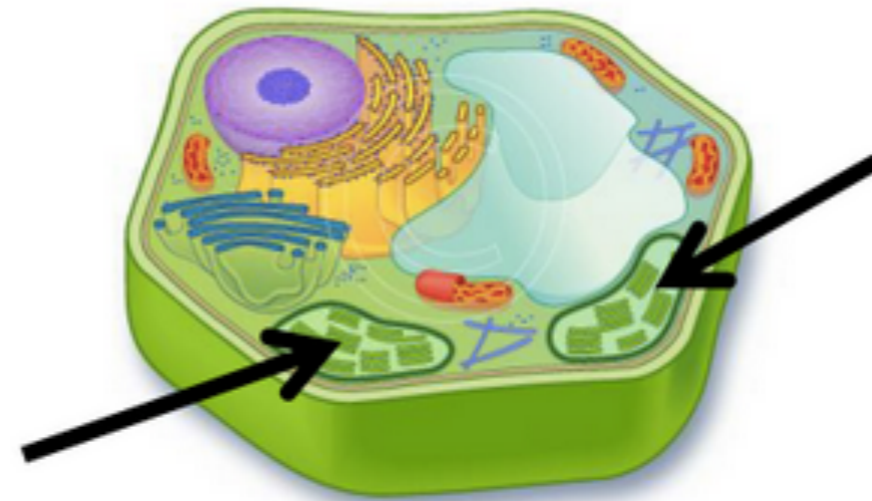


Lysosomes are important to the cell because they break down waste. If this waste was not broken down, the cell would not be able to function properly.



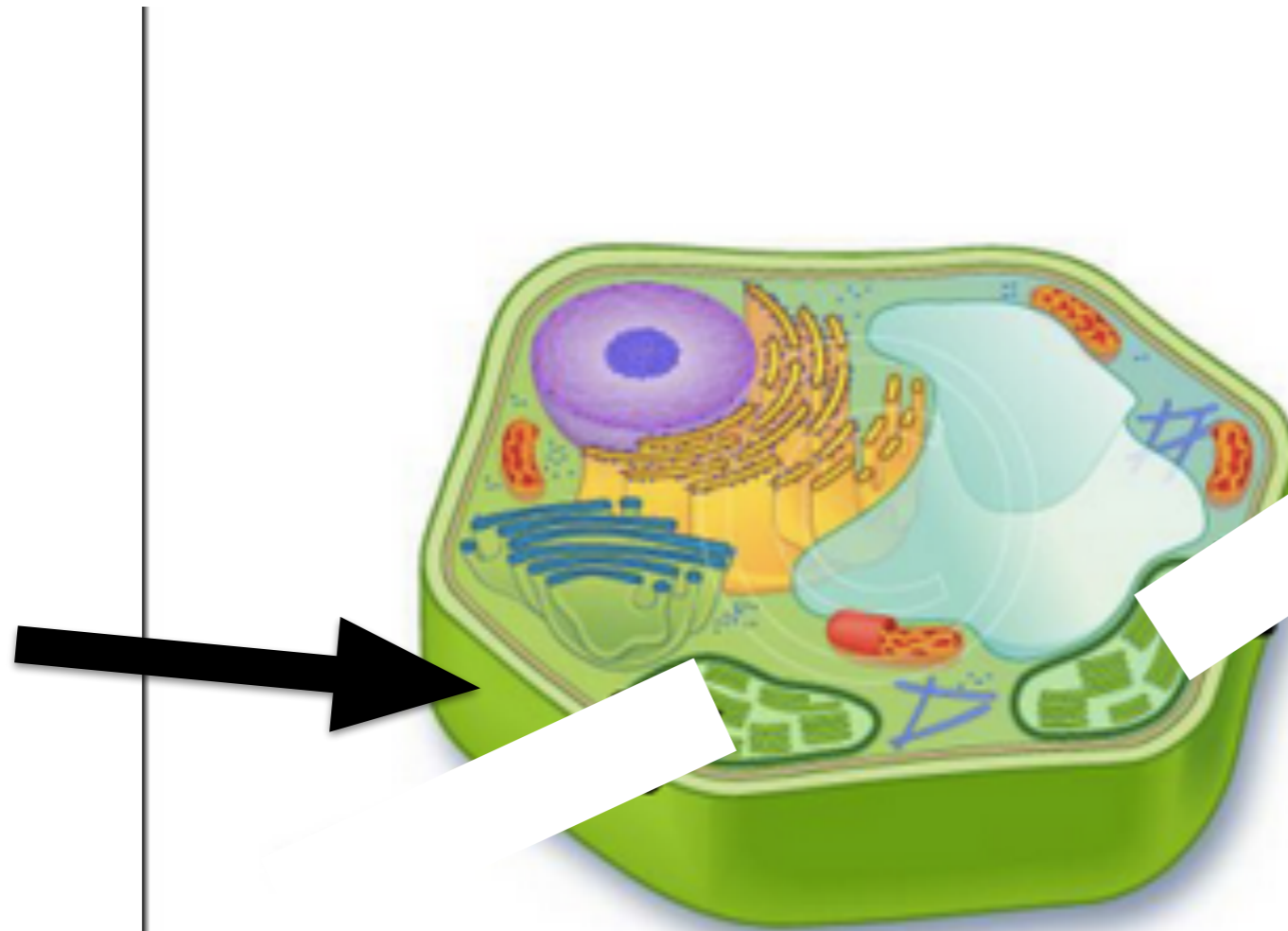
Mitochondria are responsible for providing the cell with energy. They convert the energy in the sugar we eat into energy that the cell can use in a process called cellular respiration. Both plant and animal cells have mitochondria.

**The green kidney-bean shaped organelle where photosynthesis takes place. This organelle is filled with chlorophyll, the green pigment that absorbs sunlight.**



**Chloroplast**

Chloroplasts convert energy in sunlight to sugar. They are only in plant cells, NOT animal cells.

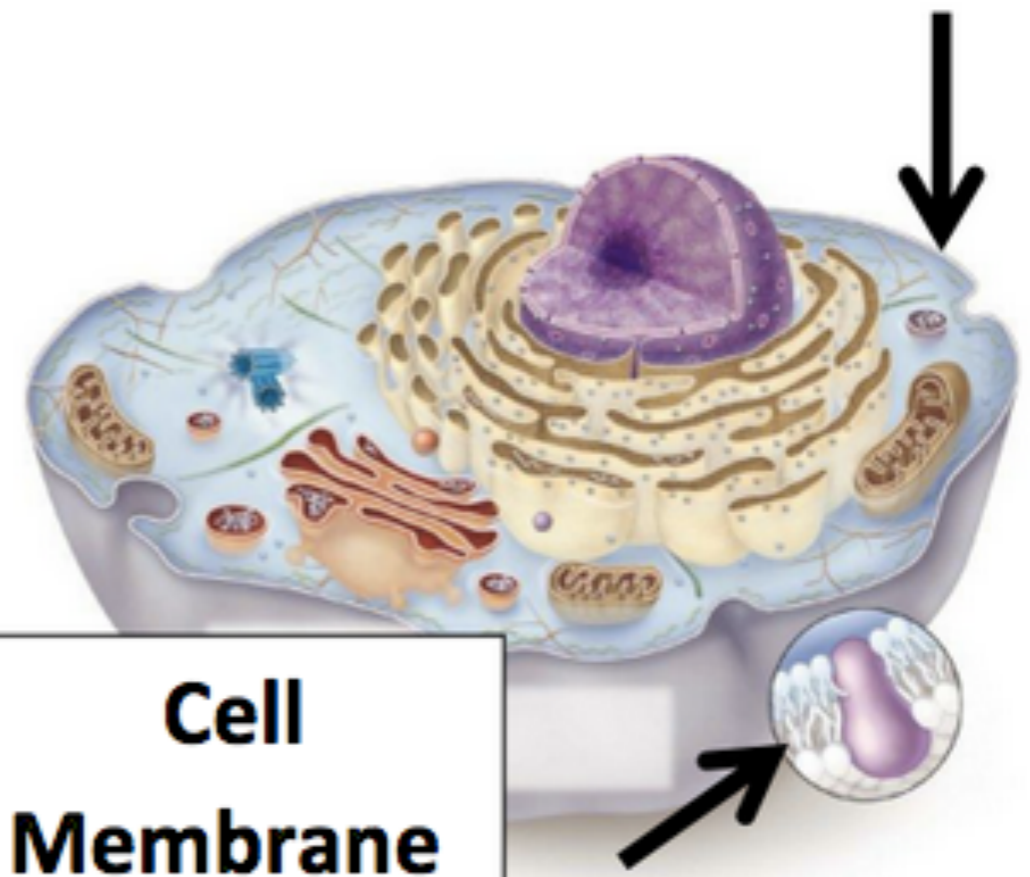


## Cell Wall

The cell wall provides structure and support for plant cells. It surrounds the cell and is outside the cell membrane. Animal cells DO NOT have a cell wall.



**The outside of a cell. It forms a boundary around the cytoplasm of the cell. If the cell has a cell wall, like bacteria and plant cells, then this structure is inside the cell wall. This structure controls the passage of materials into and out of the cell.**



**Cell  
Membrane**